



## DELUXE SOUP & FOOD WARMER

**Model No.: SW-11**

### **Specifications:**

Capacity: 10.5 Quarts  
Voltage: 120 V AC/475W  
Weight: 8 LBS.

### **IMPORTANT**

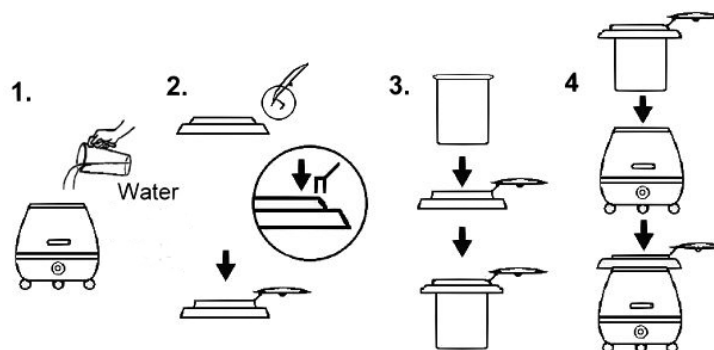
- Do not operate when warmer or aluminum pot is empty.
- Do not immerse unit in water; doing so will lead to damage and result in the warranty being voided.
- Damaged power cords must be replaced by an authorized service company.

### **OPERATING INSTRUCTIONS**

- ◆ Place the soup warmer on a level, horizontal table.
- ◆ Plug unit into electric socket.
- ◆ Locate the "Max Line" mark on aluminum pot for reference.
- ◆ Add about 2½ cups of water into the aluminum pot, not the *Stainless Steel Container*.
- ◆ *Never* overfill with water, and *never* let the Stainless Steel Container float up, even when empty.
- ◆ If a float up condition occurs, please remove any excess water immediately.
- ◆ The temperature control should be set between 1 and 8. In order to maintain the correct food temperature, it is highly recommended to operate the unit at the lowest temperature necessary.
- ◆ The light will turn while the unit is ON, and it will be not light on the OFF position.
- ◆ When the unit is set to "0", the unit will be in the OFF position; please remember to unplug the warmer from the electrical outlet.
- ◆ The lid must be in the closed position when the unit is not serving.
- ◆ Never move or carry the soup kettle when the unit is switched on or when containing hot food.

### **MAINTENANCE**

- Spilled food and external surfaces must be cleaned up immediately.
- The Stainless Steel Container is machine washable. It may discolor.
- Ensure unit is unplugged when not in use during filling and when being cleaned.
- The external pot and top collar should be wiped over with a damp soapy cloth only.
- Never immerse warmer in water.
- Never operate when empty.



### **CONTACT INFORMATION:**

If you have any questions please kindly contact your local supplier for service, or you may contact us at the following:

**Cecilware Corporation**  
Phone (800) 935-2211  
(718) 932-1414  
Fax (718) 932-7860  
[www.cecilware.com](http://www.cecilware.com)

